



INDOOR & ROOFTOP APPLICATIONS

FIELD ADJUSTABLE AIR FLOW FROM 0-1000 CFM

4 ECM SPEED-INPUT OPTIONS

SPECIFICATION

CORE: Static Plate, Crossflow. Certified to AHRI 1060

-HRV: Polypropylene, 2 x p/n *PC1414A* (AHRI Ref.# PC14)

-ERV: Enthalpic membrane, 2 x p/n *EC1414A* (AHRI Ref.# EC14)

-Core segment dimensions: 14"L x 14"W x 14"H ea.

CABINET/CONSTRUCTION

-Dimensions (incl. lifting frame): 52"L x 30"W x 37.5"H

-2 doors for flexible component access and reversible field orientation of unit

-Door-mounted pressure ports for air flow balancing

-Single-wall 22 GA galvanized steel, 1" foil-faced rigid insulation

-Configurations A and E (see drawings) available

-Duct connections: 14" x 8". Weather hoods c/w bird screen.

-Drain connections (when used): 1/2"

-Unit Weight: 250 lbs (114 kg) Shipping Weight: 285 lbs (130 kg)

MOTORS - FANS - FILTERS

-2 x 1/2 HP ECM, independently adjustable, p/n 50054

-2 x DWDI direct drive blowers, p/n 50778

-4 x MERV 8 FILTERS, 13.5" x 14" x 1", p/n 50810

ELECTRICAL

Voltage/Hz/Phase	120/60/1	240/60/1
Unit Full Load Amps (FLA)	15.4	8.6
Minimum Current Ampacity (MCA)	18.3	10.7
Maximum Overcurrent Protection (MOCP)	25	15

Non-fused disconnect is standard.

ELECTRONICS

-4 independently adjustable speeds pots to set and utilize 0-1000 cfm. Highest speed call takes priority.

-End switch: shipped dry, but can be made 24 VAC in the field for independent or remote control

FROST CONTROL – 4 OPTIONS

-None

-Exhaust only (temperature ON/OFF)

-Timed exhaust (temperature ON/Timed OFF)

-Recirculation

OPTIONS & ACCESSORIES

-MERV 13 filters, 13.5" x 14" x 1", p/n 50811

-Dirty filter sensors

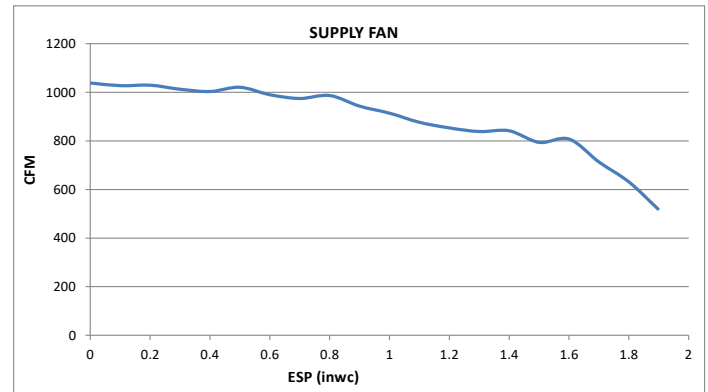
-Outside Air backdraft damper (motorized)

-Exhaust Air backdraft dampers (gravity, motorized)

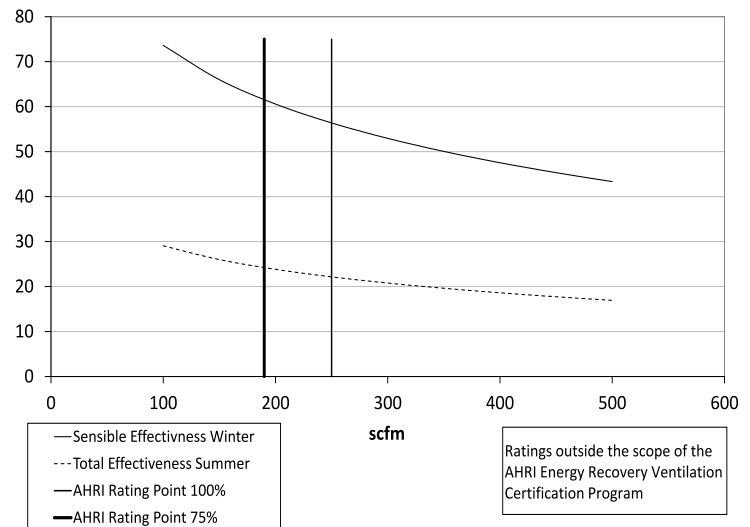
-14" roof curb, p/n *RC14-1000A*

-7-Day programmable timer, p/n 50395

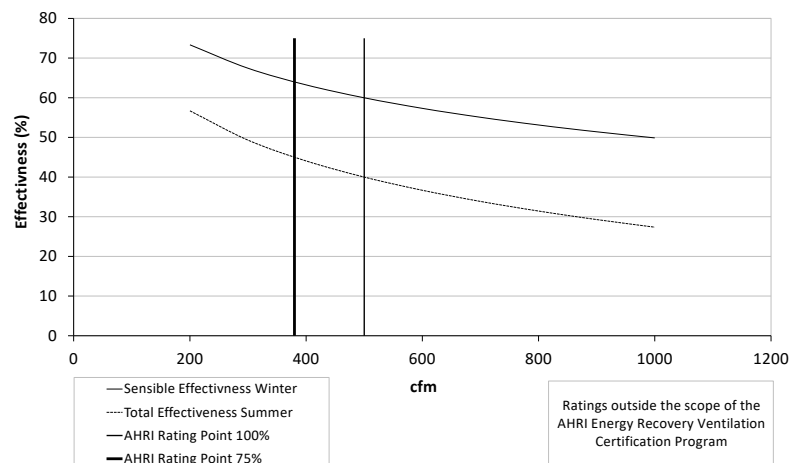
CONSTANT TORQUE FAN CURVE: HRV & ERV



EFFECTIVENESS ECM1000 HRV



EFFECTIVENESS ECM1000 ERV

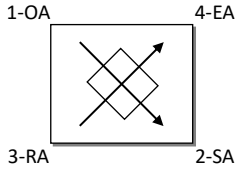


ECM1000 conforms to CSA SPE1000

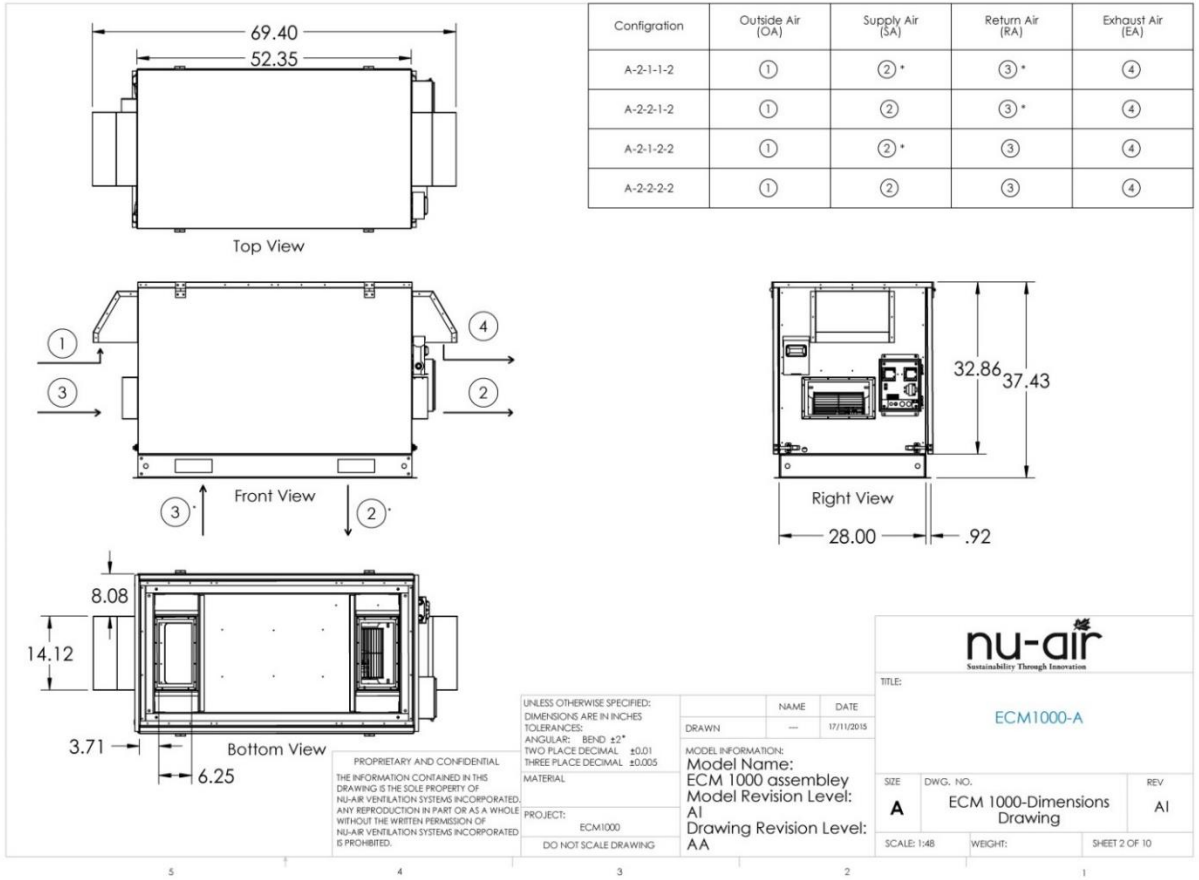
Energy recovery component is certified by AHRI to AHRI Standard 1060. Actual performance in packaged equipment may vary.

SHOP DRAWINGS (indoor & outdoor versions shown)

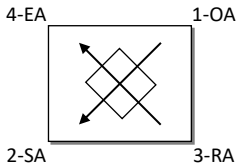
CONFIG. A



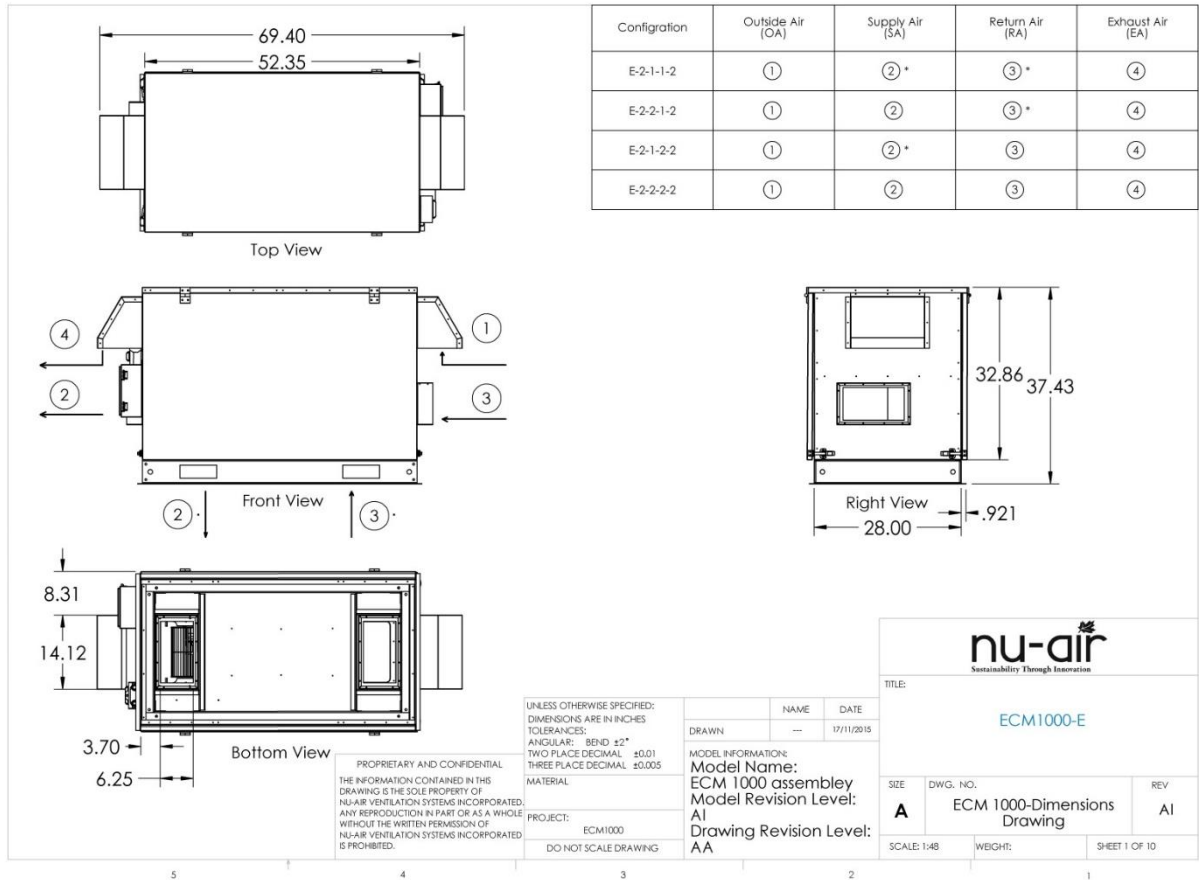
NOTE: All duct connections are 14" x 8"



CONFIG. E



NOTE: All duct connections are 14" x 8"



The diagram illustrates the breakdown of the ECM1000 model number into 14 positions, each with specific options. The positions are represented by boxes, with the first three being fixed and the last three being numeric.

Position	Options
1	MODEL ECM1000
2	CONFIGURATION A E
3	OUTSIDE AIR (OA) 2-Horizontal 4-Horizontal w/ mtr BD damper
4	SUPPLY AIR (SA) 1-Vertical 2-Horizontal
5	RETURN AIR (RA) 1-Vertical 2-Horizontal
6	EXHAUST AIR (EA) 2-Horizontal 4-Horizontal w/ gravity BD damper * Horizontal w/ mtr BD damper
7	DEFROST 0-None 1-Fan 2-Timed Fan 3-Recirculation
8	
9	
10	A
11	A
12	
13	G
14	
15	1
16	

Additional options and their corresponding positions are listed below:

- LOCATION** (Positions 17-18): I-Indoor, E-Outdoor
- END SWITCH** (Position 19): 1-Yes
- 24 VAC DIRTY FILTER CONTACT** (Position 20): 0-No, 1-Yes
- CABINET SKIN** (Position 21): G-Galvanized
- RECOVERY CORE** (Position 22): P-Polypropylene, E-Enthalpic
- EXHAUST MOTOR** (Position 23): A-1/2 HP
- SUPPLY MOTOR** (Position 24): A-1/2 HP
- VOLTAGE** (Position 25): 1-120/1, 2-240/1

10

Air Stream	Airflow	Static Pressure
Supply		
Exhaust		
Air Temperature	Winter	Summer
OA, DB		
RA, DB		



Project:	REMARKS
Location:	
Unit Designation (e.g. HRV1):	
Submitted by:	
Date:	